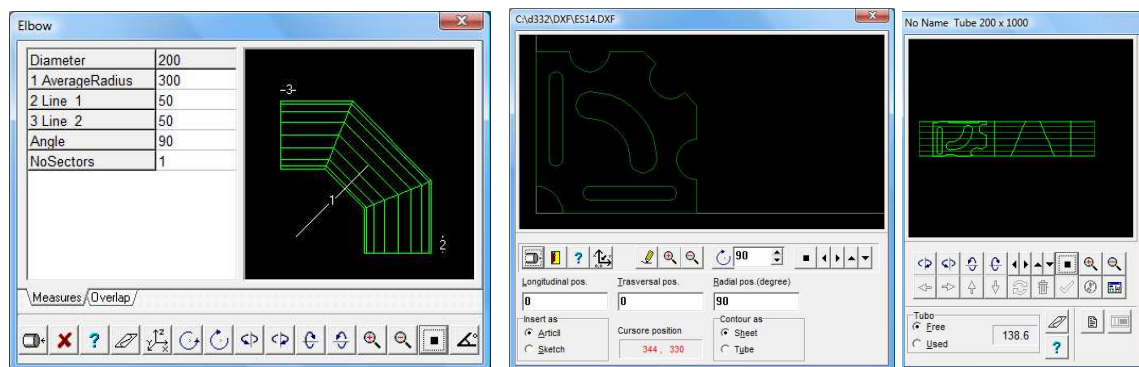
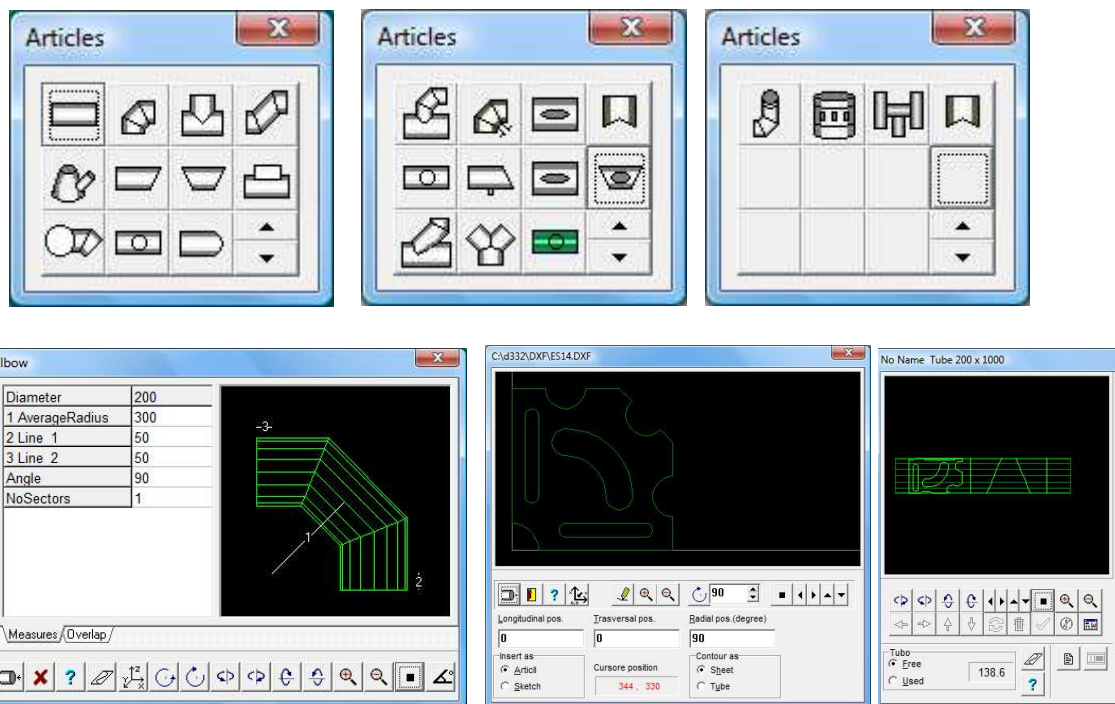


Art.05-Plasma cutting 3D



Description

- Cutting Plasma Plotter 3D dimension operated by CNC with 3 axis with linear and circular interpolation.
 - Brushless ABB drivers and motors.
 - Plasma generator CEBORA powered by 30 A mod. 3035/M.
 - Smoke extraction system following the torch.
 - Automated regulation at diameter change.
 - Diameter from 80 mm to 600 mm (optional 800 mm).
 - Thickness from 0.4 to 1.5 mm.
 - Materials: steel, galvanized, copper, aluminium.
-
- PC Panel with USB port for data transfer from PC with O.S. WindowsXp Embedded or Linux based.
 - Software BRAVO3D provided with circular pieces for component production of : flue, cooling, ventilation and insulation.
 - Import/Export drawings by an external CAD.



Machine needed of aspirator with filter of 1200 mc/h

Mod.Length (mm)	Diam.Min. (mm)	Diam.Max (mm)	Weight (kg)	Dimensions LxWxH (mm)
1000	80	600 (800)	1400	3500 x 1000x 1970
1500	80	600 (800)	1700	4000 x 1000 x 1970
2000	80	600 (800)	2100	4500 x 1000 x 1970

Options:

- Aspirator with filter
- 1200 mc/h

- Support for up to diameter 800

In order to improve the product Eurosoft reserves the right to make changes without notice.

Download movie at this address:

<http://www.4shared.com/video/Lvp5FhFV/3DXyz.html>